



**Tredington Park , Hatton Park**  
Warwick, CV35 7TT



# Asking Price £425,000



Located within the picturesque parkland estate of Hatton Park and within easy reach of Warwick Town Centre, Parkway Station and the M40 motorway, Tredington Park forms part of the Grade II Listed former Victorian Hospital, dating back to around 1846 and converted in the early 2000's by award-winning local builders.

The property would certainly appeal to executives or down-sizers that want quality finishes, with low maintenance accommodation in well-manicured grounds.

The accommodation is arranged over three floors, with the property itself being entered on the first floor of the building into a spacious and inviting Entrance Hallway. The ceiling height throughout the property adds a real feeling of grandeur, in addition to the beautiful characterful windows, which are secondary glazed. The generous and modern Kitchen Dining Room offers a wealth of wall and base units with integrated appliances including double oven, 6-ring gas hob, extractor and dishwasher and plenty of space for a sizeable dining table and the separate Utility Room, also with wall and base units, houses all white goods and has a useful secondary sink unit. The Living Room is located at the opposite end of the hallway and is a very well-proportioned room. This floor also benefits from a WC and a wealth of understairs storage space.

Upstairs, the property offers a substantial Main





# Asking Price £425,000

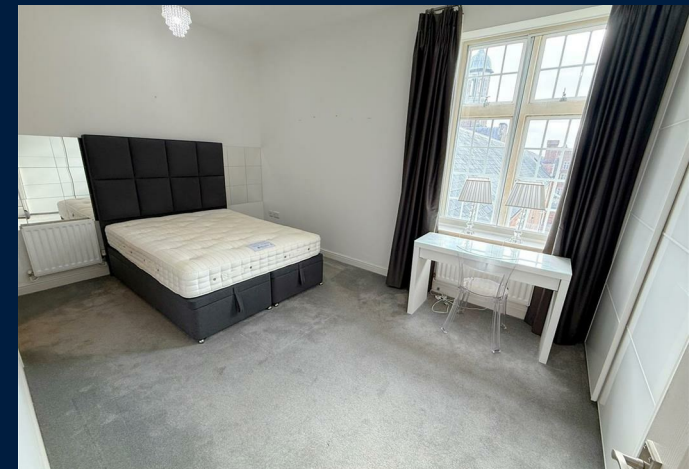


Bedroom, benefitting from an en-suite shower, in addition to three further Bedrooms; one good-sized Double Bedrooms with Fitted Wardrobes, a sizeable single bedroom (currently housing bunkbeds) and a fourth Single Bedroom / Nursery.

A further staircase leads up from this floor, into the roof space of the property, which has been cleverly converted into an office / study space, with an external door leading out from here onto a superb shared roof terrace offering beautiful views over far-reaching countryside.

The property has two allocated parking spaces and an unexpired lease of approx 973 years.

NO ONWARD CHAIN





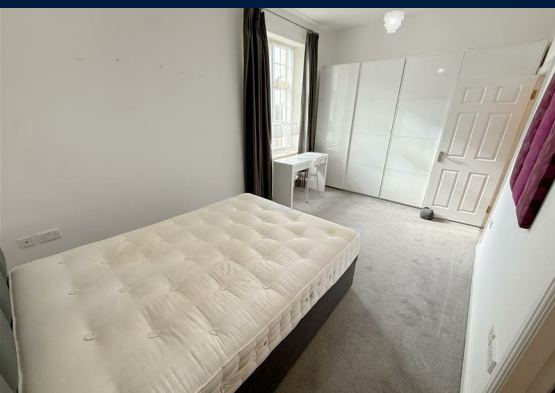
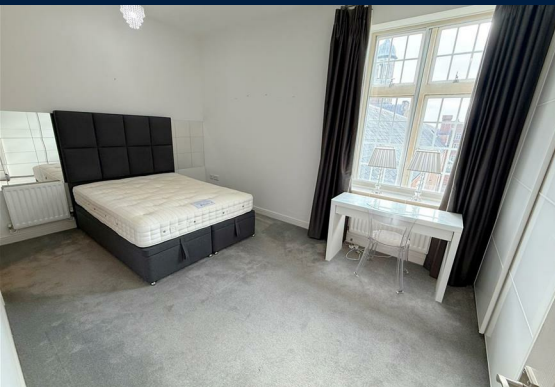


**Tax Band: E**

**Council:**

**Tenure: Leasehold**

Hatton Park is conveniently located for access to the major road networks nearby. It is a varied mix of family residential and professionals alike with Warwick, Leamington Spa, Stratford Upon Avon and Coventry all within easy driving distances. Warwick is only minutes drive in one direction and the rural countryside in the other offering a fabulous base. There is a village shop on offer within the development. Access to Warwick train station and also Warwick Parkway offering travel options by train to Birmingham and London alike.





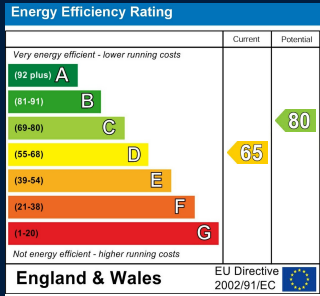
# Floor Plan



## Map



## Energy Performance



These particulars, whilst believed to be accurate are set out as a general outline only for guidance and do not constitute any part of an offer or contract. Intending purchasers should not rely on them as statements of representation of fact, but must satisfy themselves by inspection or otherwise as to their accuracy. No person in this firms employment has the authority to make or give any representation or warranty in respect of the property.

55 Ely Street, Stratford Upon Avon, Warwickshire, CV37 6LN  
Tel: 01789 868168 Email: stratford@jeremymcginns.com www.jeremymcginns.com